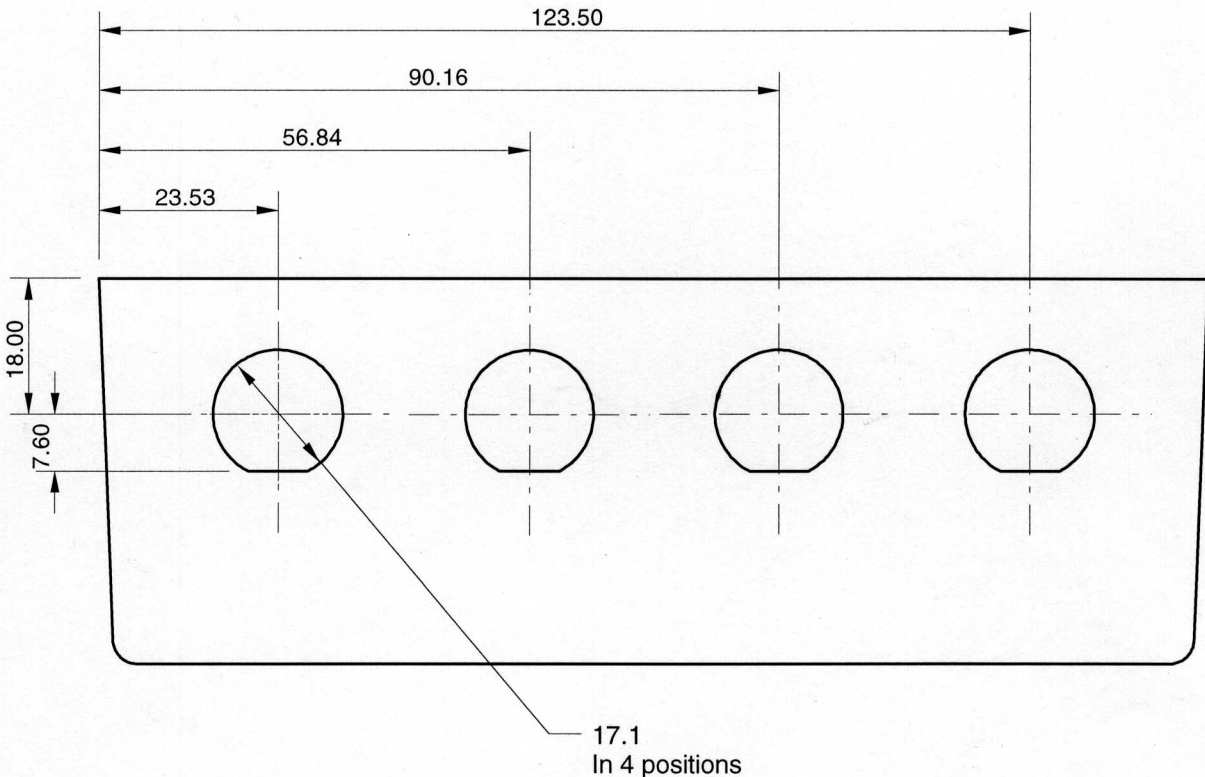
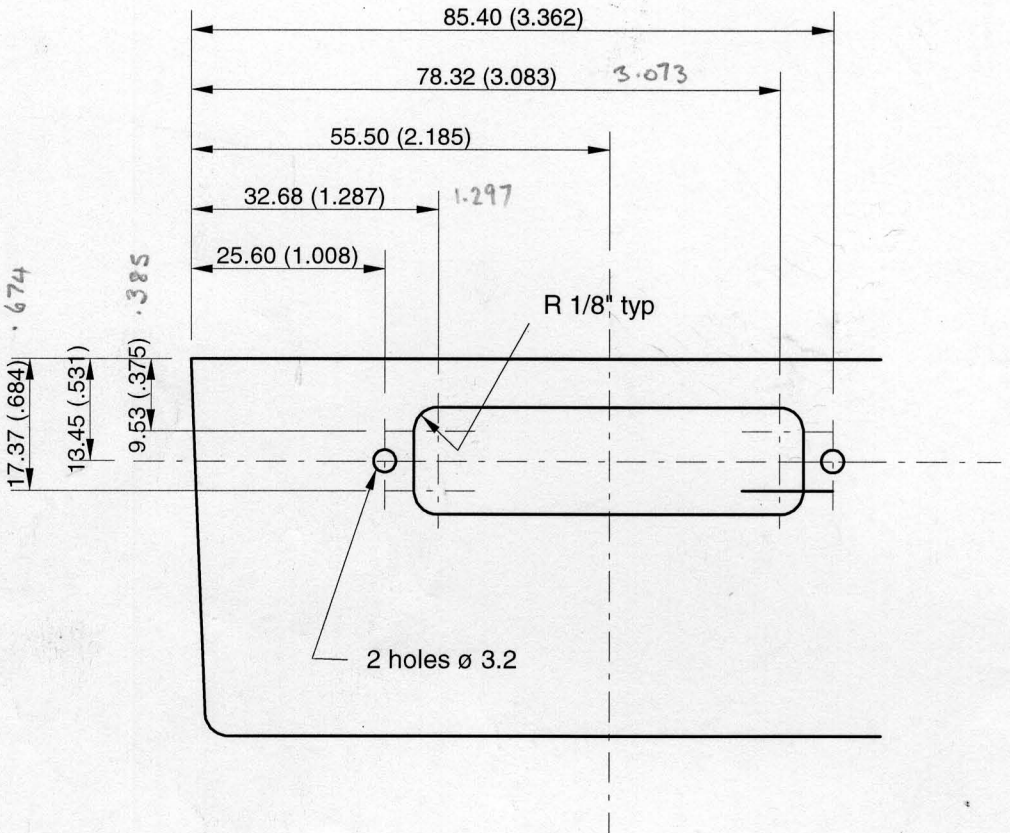


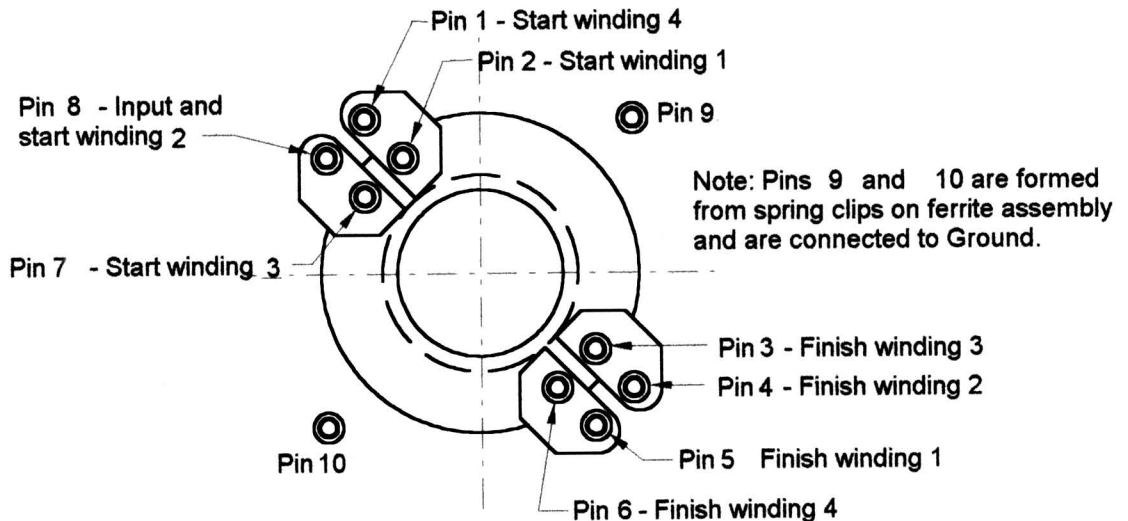
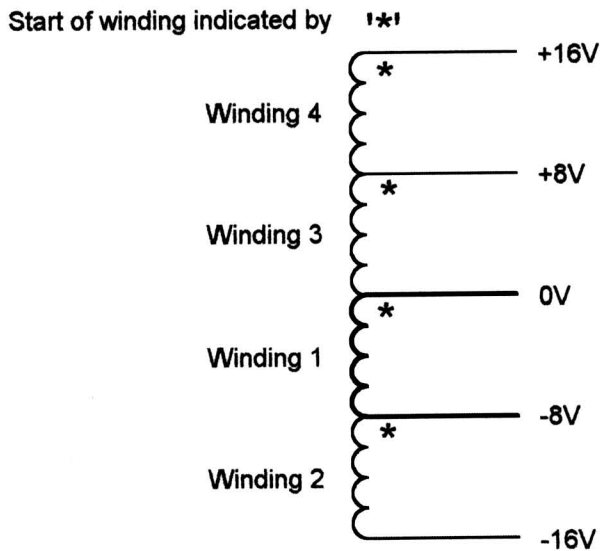
Resistivity Box
Power Supply and Fuse Holes



Resistivity Box
Loom Input Socket Holes



Resistivity Box
 Computer Interface Socket Machining



Pin view on Bobbin

Bobbin is part of RM series ferrite core
 RM10 = RS Stock Number 228-242

Winding 1 = 32 turns of $\varnothing 0.56\text{mm}$ wire
 Windings 2,3,4 = 32 turns $\varnothing 0.236$ wire

All winding wires are twisted together before winding onto bobbin.